



GGD

Amsterdam

**Differences in access to HIV testing, treatment and
healthcare among non-migrants and migrants
living with HIV in the Netherlands:
a cross-sectional study**

Janneke Bil, MSc

GGD Amsterdam / Public Health Service of Amsterdam

Department of infectious Diseases Research and Prevention

NCHIV

21 November 2017

XXX Disclosure of speaker's interests

Relations that could be relevant for the meeting	Company names
• <i>Sponsorship or research funds</i>	<i>Gilead Sciences, Inc / Roche Diagnostics (both not related to this study)</i>
• <i>Honorarium or other (financial) compensation</i>	<i>No conflict of interest</i>
• <i>Shareholder</i>	<i>No conflict of interest</i>
• <i>Other relationship, namely..</i>	<i>No conflict of interest</i>




Aim:

To assess differences in access to HIV prevention, testing and treatment between non-migrant and migrant men who have sex with men (MSM) and heterosexual patients living with HIV in the Netherlands.

Data collection & recruitment

- aMASE study data (Advancing Migrant Access to health Services in Europe)
- July 2013-June 2015
- Recently diagnosed HIV-positive patients recruited at 3 Dutch HIV outpatient clinics

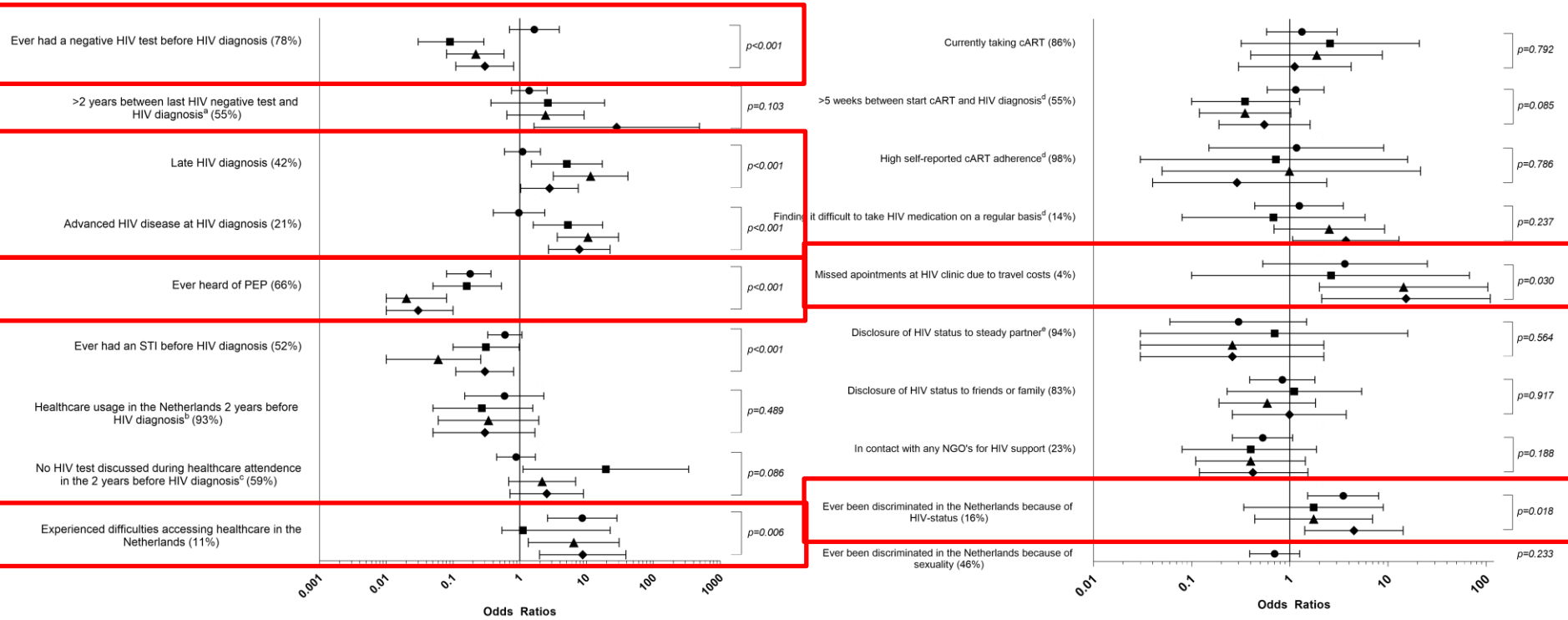


- Migrants were defined as persons born outside the Netherlands
-  Questionnaire data + clinical indicators of HIV disease





Differences in testing behaviour, access to healthcare, HIV treatment, disclosure and discrimination



Ref. Non-migrant MSM (n=115) ● Migrant MSM (n=77) ■ Non-migrant heterosexual men (n=14) ▲ Migrant heterosexual men (n=21) ◆ Migrant women (n=20)



Conclusion



As the structural barriers to access HIV prevention, testing, healthcare appeared to differ between HIV-positive non-migrant MSM, migrant MSM, non-migrant heterosexual men and migrant women, interventions need to be tailored accordingly.

For example:

- Increase earlier HIV testing among heterosexuals at risk for HIV
- Address barriers to access care and HIV treatment among migrants



Acknowledgements

Everyone who participated in the surveys!!!!

aMASE Working Group

Anne-Françoise Gennotte • Cécile La Morté • A Barthélemy • Claudia Wengenroth • Giota Touloumi • Gountas Ilias • Koulai Loumpiana • Anagnostou Olga • Gundolf Schüttfort, • Claudia Wengenroth • Henrique Barros • Paula Meireles • Julia del Amo • **Déborá Álvarez** • Susana Monge • Bruno Ledergerber • Cornelia Staehelin • Maria Prins • Janneke Bil • Freke Zuure • Tullio Prestileo • Nicolla Petrosillo • Fiona Burns • **Ibi Fakoya**

Advisory Members of aMASE Working Group

Anne Johnson • Teymur Noori • Ade Fakoya • Alain Volny-Anne • Kevin Fenton • Ramazan Salman

Clinics participating in the clinic survey

The Netherlands: Academic Medical Center (AMC) • Medisch Centrum Haaglanden • Onze Lieve Vrouwe Gasthuis

Co-authors

Freke R. Zuure, Debora Alvarez-del Arco, Jan Prins, Kees Brinkman, Eliane Leyten, Ard van Sighem, Fiona Burns, Maria Prins

Funders of the study

European Union's Seventh Framework Programme for research, technological development and demonstration under EuroCoord grant agreement n° 260694 • Public Health Service of Amsterdam's (PHSA) Research and Development Fund (project number 12-29) • Funders of the HIV monitoring foundation

www.amase.eu



QUESTIONS?

jbil@ggd.amsterdam.nl